

Assistive Technology

What is Assistive Technology?



Assistive technology (AT) is any device or piece of equipment that is used to overcome or deal with barriers in everyday life.

Individuals who have hearing loss typically need devices that provide louder than normal alerts, flashing lights, vibrations, or any combination of these.

Some examples of commonly used AT are: amplified and captioned telephones, TV listening devices, personal amplifiers, flashing/vibrating alarm clocks, and closed captions.

You will notice several different terms used to describe assistive technology devices for individuals with hearing loss:

Hearing Assistance Technology (HAT) - this is the broad term that applies to all assistive technology for individuals that have hearing loss.

Assistive Listening Devices (ALDs) - these are typically personal devices that amplify sounds, ie. telephone amplifiers, TV streamers, personal amplifiers, etc.

Visual Alert Signalers (VAS) - these devices use lights and/or vibration to alert individuals of sounds such as the ringing telephone, alarm clock, baby crying, doorbell, fire alarm, etc.

Apps - there are a variety of apps available for Apple and Android devices that are designed to provide assistance to people with hearing loss. Do an online search for “apps for people with hearing loss” or search your device’s app store.

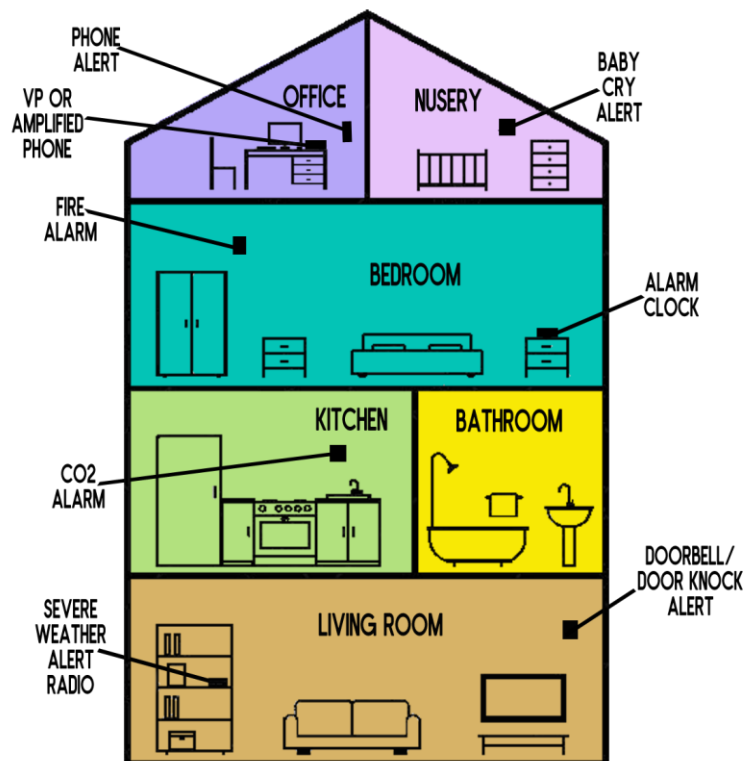
Not sure what device you need in your home?

The Kentucky Assistive Technology Service (KATS) Network is an organization working with individuals with disabilities to help determine which assistive technology device(s) will meet their needs. Individuals can explore the lending library to try out or to purchase a used device for free or at low cost by setting up an account.

To learn more about KATS, visit their website at www.katsnet.org/.



USING ASSISTIVE TECHNOLOGY AT HOME



KENTUCKY COMMISSION ON THE DEAF AND HARD OF HEARING

632 Versailles Road, Frankfort, Kentucky 40601

502-573-2604 V/T * 800-372-2907 V/T * 502-416-0607 VP * 502-573-3594 Fax * kcdhh.ky.gov

An agency of the Kentucky Education and Labor Cabinet * Printed with State Funds

Assistive Technology

Where can you purchase an Assistive Technology Hearing device?



An online search for 'Assistive Technology' will lead you to multiple vendors that sell these devices. We have listed a few of these vendors below. We encourage you to research each company to compare products and prices. If you have questions about a particular device, you should contact that company directly. They are the experts and will be happy to help you.

Inclusion or omission of a vendor name on the list does not indicate whether or not KCDHH endorses the vendor.

Assistive Technology vendors:

<p>clarity. Clarity 6131 Preservation Drive Chattanooga, TN 37416 800-426-3738 www.clarityproducts.com</p>	<p><small>PRODUCTS FOR INDEPENDENT LIVING</small> HEARMORE.com Hear More 42 Executive Blvd. Farmingdale, NY 11735 800-881-4327 \ 631-752-1145 VP www.hearmore.com</p>
<p> Clear Sounds 4909 Bell Springs Road Dripping Springs, TX 78620 800-965-9043 www.clearsounds.com</p>	<p> Maxi Aids 42 Executive Blvd Farmingdale, NY 11735 800-522-6294 \ 631-752-1145 VP www.maxiaids.com</p>
<p>DEAFWORKS® DEAFWORKS P.O. Box 1265 Provo, UT 84603 800-855-2881 www.deafworks.com</p>	<p> Sonic Alert Specialized Hearing Solutions 1050 East Maple Road Troy, MI 48083 248-577-5400 www.sonicalert.com</p>
<p>Diglo Diglo 15155 Technology Drive Eden Prairie, MN 553344 800-825-6758 \ 952-388-2152 VP www.diglo.com</p>	<p> TelTex Inc. 1081 W Innovation Drive Kearney, MO 64060 888-515-8120 www.teltext.com</p>

Captioned phones and TTYs ONLY:

<p> Ultratec, Inc. 450 Science Drive Madison, WI 53711 800-482-2424 www.ultratec.com</p>	<p> WCI 1500 Olympic Blvd Santa Monica, CA 90404 800-233-9130 www.weitbrecht.com</p>
--	--

KCDHH provides effective and efficient leadership, education, advocacy and direct services to eliminate barriers and to meet the social, economic, educational, cultural and intellectual needs of Kentuckians with a hearing loss.